



Kohinoor
Continental

REIMAGINED FOR THE MODERN TRAVELLER

Where timeless hospitality meets contemporary sophistication. Kohinoor Continental has been thoughtfully renovated to offer a seamless blend of intuitive technology, elevated design, and curated experiences making it a preferred destination for business leaders, event hosts, and leisure seekers alike.

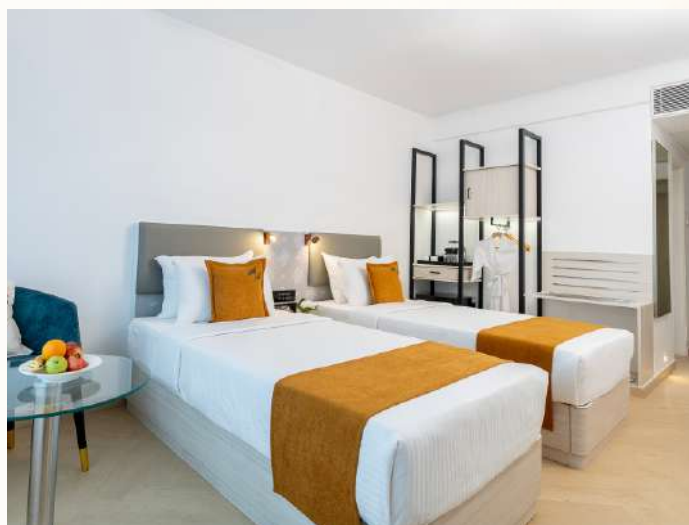


ACCOMMODATION

137 ROOMS. INFINITE COMFORT.

Each room is a sanctuary of calm, crafted with ambient lighting, plush textures, and upgraded amenities. Whether you're here for a quick business trip or a long-awaited celebration, your space is designed to feel like a personal retreat.

Room Category	No. of Rooms
Sapphire	1
Topaz	1
Club	13
Premium	59
Superior	47
Deluxe	16
Total	137





DINING & LOUNGE EXPERIENCES

FLAVOUR MEETS FINESSE

The Solitaire

All-day dining with global flavours, sunlit bay windows, and a serene poolside view ideal for both business brunches and leisurely indulgence.



The Beryl Club

A chic lounge bar with English pub charm, curated spirits, and mood lighting that invites you to linger longer.



Paschim

A tribute to Western India's culinary soul, where handcrafted interiors meet bold regional flavours from Gujarat, Maharashtra, and Rajasthan.



CRAFTED FOR EVERY OCCASION

FROM BOARDROOM BRILLIANCE TO BALLROOM GRANDEUR,
OUR VENUES ADAPT TO YOUR VISION.



Whether it's a high-stakes conference, a milestone celebration, or a themed soirée, our banquets offer flexibility, elegance, and seamless service.

BANQUETS

Venue	Area	Dimension	U Shape	Board Room	Theatre	Classroom	Round	Cluster
EMERALD I	915 Sqft	30 X 30 (11.6 Feet Height)	25	24	50	24	32	30
EMERALD II	1664 Sqft	32 x 52 (11.6 Feet Height)	44	42	120	42	80	72
EMERALD HALL	3047 Sqft	82 x 36.5 (11.6 Feet Height)	80	70	230	66	145	126
RUBY I	1280 Sqft	45 x 24 (10 Feet Height)	35	35	80	40	48	48
RUBY II	360 Sqft	20 x 18 (10 Feet Height)	12	14	25	12	16	18

BUSINESS, BEAUTIFULLY DONE

Kohinoor Continental is designed for the discerning professional. With proximity to Mumbai's commercial hubs, high-speed connectivity, and versatile meeting spaces, we offer a polished environment where ideas flow and deals close.



**EXECUTIVE BOARDROOMS WITH
MODERN AV SETUPS**

**DEDICATED BUSINESS
LOUNGE ZONES**

**CONCIERGE SUPPORT FOR
CORPORATE GUESTS**

**QUICK ACCESS TO MIDC, SEEPZ,
AND THE AIRPORT**

BEYOND THE STAY

Step into a world where wellness, creativity, and motion come together.

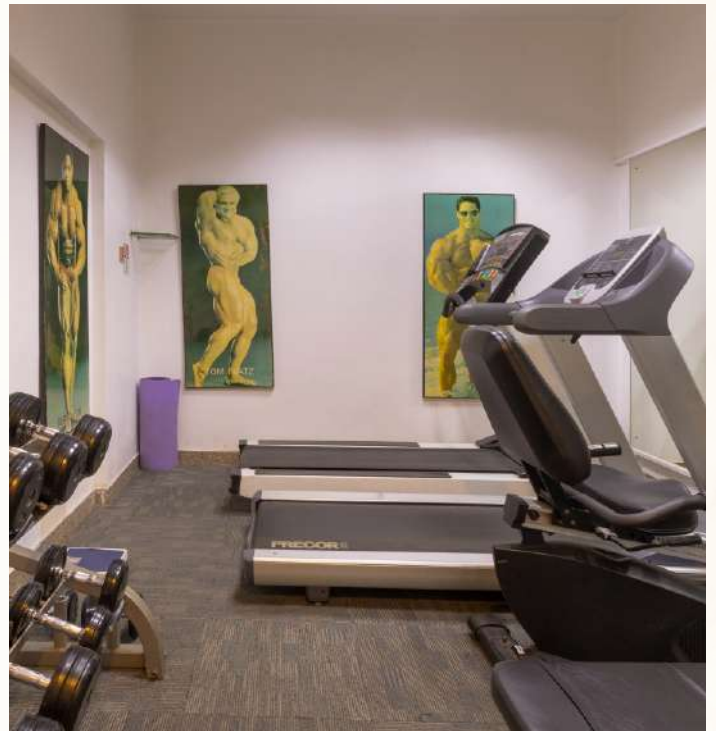
Kratos Spa

Rejuvenate with therapies that restore balance and beauty.



Fitness Center

A sleek, spacious studio with state-of-the-art equipment.



OCCASION-READY OFFERINGS



Weddings



Birthdays



Anniversaries



Conferences



Get-Togethers

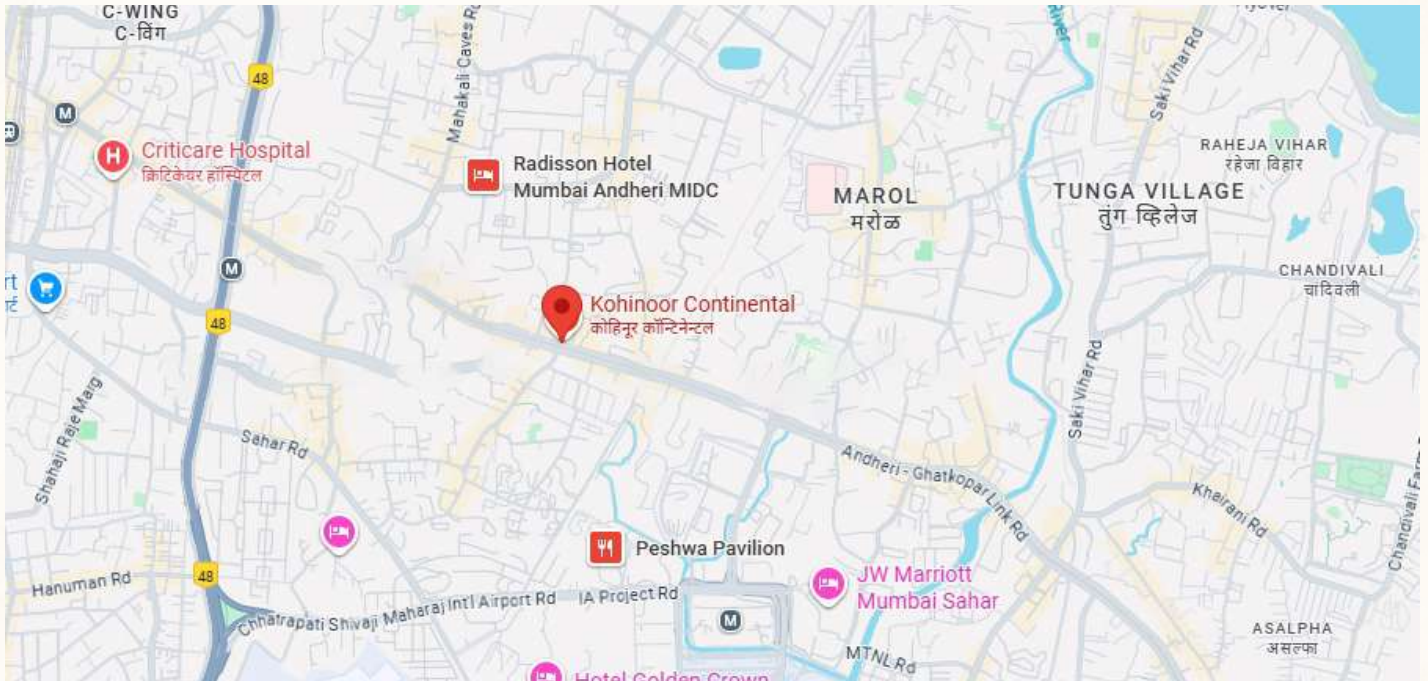


Theme Parties



Explore More, Effortlessly

Located in the heart of Andheri East, Kohinoor Continental offers quick access to Mumbai's vibrant mix of business and leisure.



Mumbai Exhibition Centre

3 kms

Premier venue for trade fairs, exhibitions.

Chakala Metro Station

1 km

Convenient metro stop for city travel.

Mumbai International Airport

5 kms

Mumbai's main hub for international flights.

Bandra-Kurla Complex (BKC)

8 kms

Upscale district for business and finance.

Juhu Beach

6 kms

Iconic beach known for lively atmosphere.

Andheri Railway Station

2 kms

Major suburban station with city connections.

GALLERY



STAY CONNECTED

Scan the QR to explore more, book your stay, or follow our journey



PART OF THE KOHINOOR HOSPITALITY FAMILY

